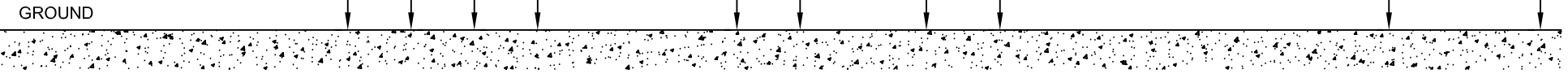
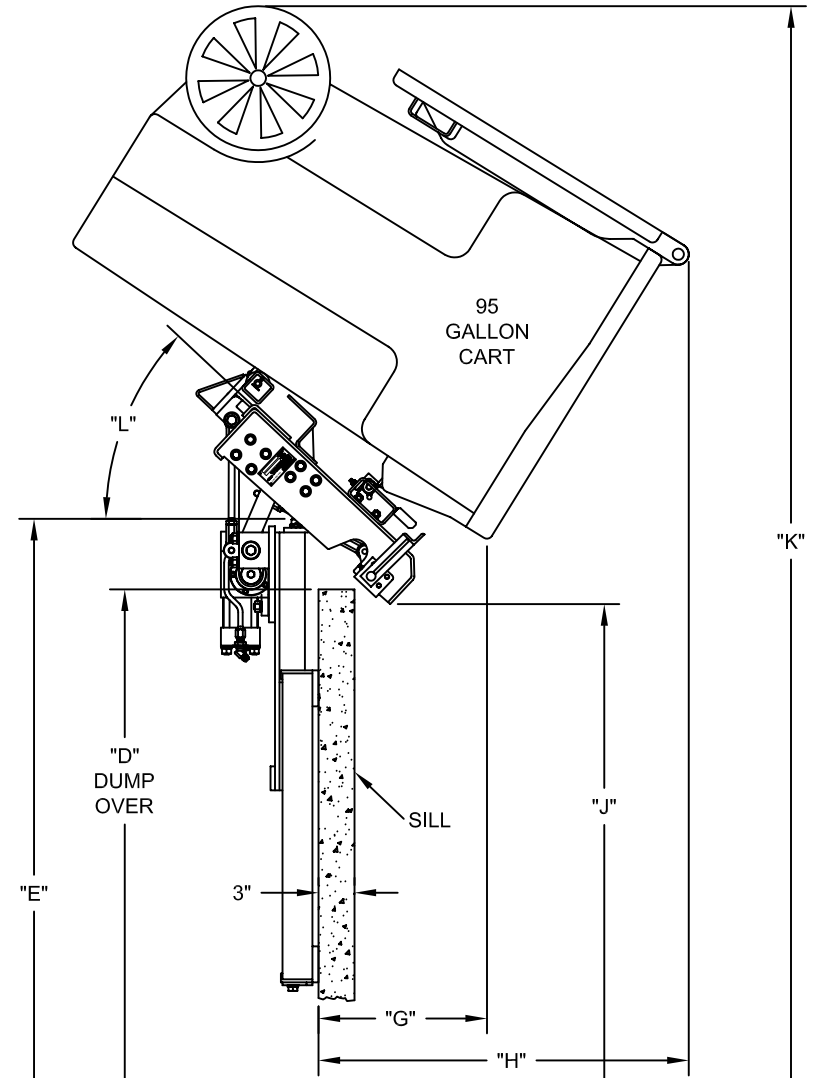
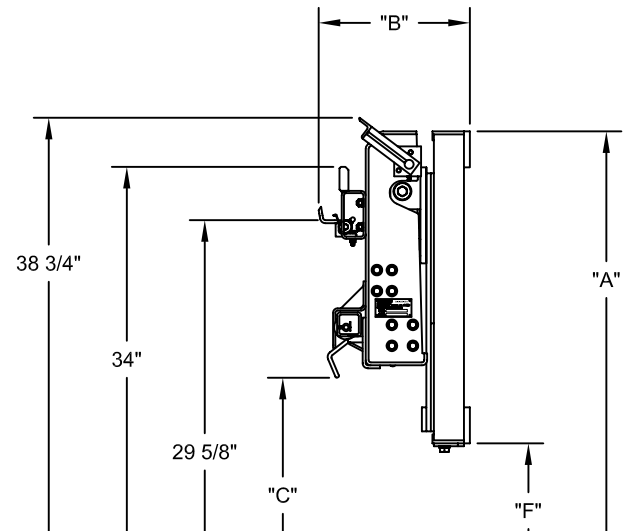
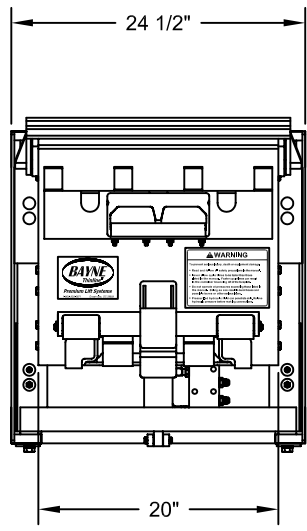


**NOTE:**

1. DIMENSIONS ACCOMMODATE ANSI Z245.60-2008 TYPE B CONTAINERS (DOMESTIC 2-BAR CARTS) AND MOST TYPE C CONTAINERS (EUROPEAN COMB-LIFT CARTS), BUT MAY VARY DUE TO CONTAINER SPECIFICATIONS OR APPLICATIONS.
2. ALL DIMENSIONS ARE APPROXIMATE.
3. CVTL UNITS WITH 15" OR LONGER ARMS REQUIRE A 4" MINIMUM OFFSET.
4. UNITS MARKED WITH \*\* HAVE A SLOW DOWN ACTUATOR.
5. FOR BOLT-ON APPLICATIONS USE MOUNTING PLATES 7900-1524.
6. PART NUMBERS: SEE CHART



<b>CONFIDENTIAL</b>		UNLESS OTHERWISE SPECIFIED DIMENSIONS ARE IN INCHES LINEAR TOLERANCES: FRACTIONAL ±1/32 TWO PLACE DECIMAL ±.015 THREE PLACE DECIMAL ±.005 ANGULAR TOLERANCES: MACHINED ±0.25 DEG BEND ±1.00 DEG		<b>BAYNE MACHINE WORKS, INC.</b>			
THE INFORMATION CONTAINED IN THIS DRAWING IS THE SOLE PROPERTY OF BAYNE MACHINE WORKS, INC. AND IS RECALLABLE AT ANY TIME. IT MUST NOT BE COPIED OR USED DETRIMENTALLY TO THE INTEREST OF BAYNE MACHINE WORKS, INC.				910 FORK SHOALS ROAD - GREENVILLE, SC 29605 - 864.288.3877			
MATERIAL		DRAWN BY	DATE	SCALE	SHEET	OF	
		CTT	10/15/2009	NONE	1	2	
QTY	FINISH	WEIGHT	CHECKED BY	DATE	DWG NO	REV	
					H0300017	-	

**TITLE**  
**CVTL + 15" SERIES SPECIFICATIONS**

MODEL NUMBER	PART #	"A" DIM.	"B" DIM.	"C" DIM.	"D" DIM.	"E" DIM.	"F" DIM.	"G" DIM.	"H" DIM.	"J" DIM.	"K" DIM.	"L" DIM.
CVTL 1110 + 15"	1961-0072	37"	12 5/8"	16 3/8"	43 3/4"	49 5/8"	11"	14"	30 7/8"	42 1/2"	92 3/8"	43°
CVTL 1115-2524 + 15"	1961-0074	42"	16 5/8"	16 3/8"	55 7/8"	54 5/8"	16"	17 1/8"	36 1/2"	51 1/4"	102"	50°
CVTL 1120-2524 + 15"	1961-0075	47"	16 5/8"	16 3/8"	66 7/8"	59 5/8"	21"	17 7/8"	35 3/8"	62 1/8"	112 1/4"	45°
CVTL 1120-2524 + 15" **	1961-0093											

<b>CONFIDENTIAL</b>		UNLESS OTHERWISE SPECIFIED DIMENSIONS ARE IN INCHES		<b>BAYNE MACHINE WORKS, INC.</b>	
THE INFORMATION CONTAINED IN THIS DRAWING IS THE SOLE PROPERTY OF BAYNE MACHINE WORKS, INC. AND IS RECALLABLE AT ANY TIME. IT MUST NOT BE COPIED OR USED DETRIMENTALLY TO THE INTEREST OF BAYNE MACHINE WORKS, INC.		LINEAR TOLERANCES: FRACTIONAL ±1/32 TWO PLACE DECIMAL ±.015 THREE PLACE DECIMAL ±.005		910 FORK SHOALS ROAD - GREENVILLE, SC 29605 - 864.288.3877	
		ANGULAR TOLERANCES: MACHINED ±0.25 DEG BEND ±1.00 DEG		TITLE CVTL + 15" SERIES SPECIFICATIONS	
MATERIAL		DRAWN BY CTT	DATE 10/15/2009	SCALE NONE	SHEET OF 2 2
QTY	FINISH	WEIGHT	CHECKED BY	DATE	DWG NO H0300017
					REV -