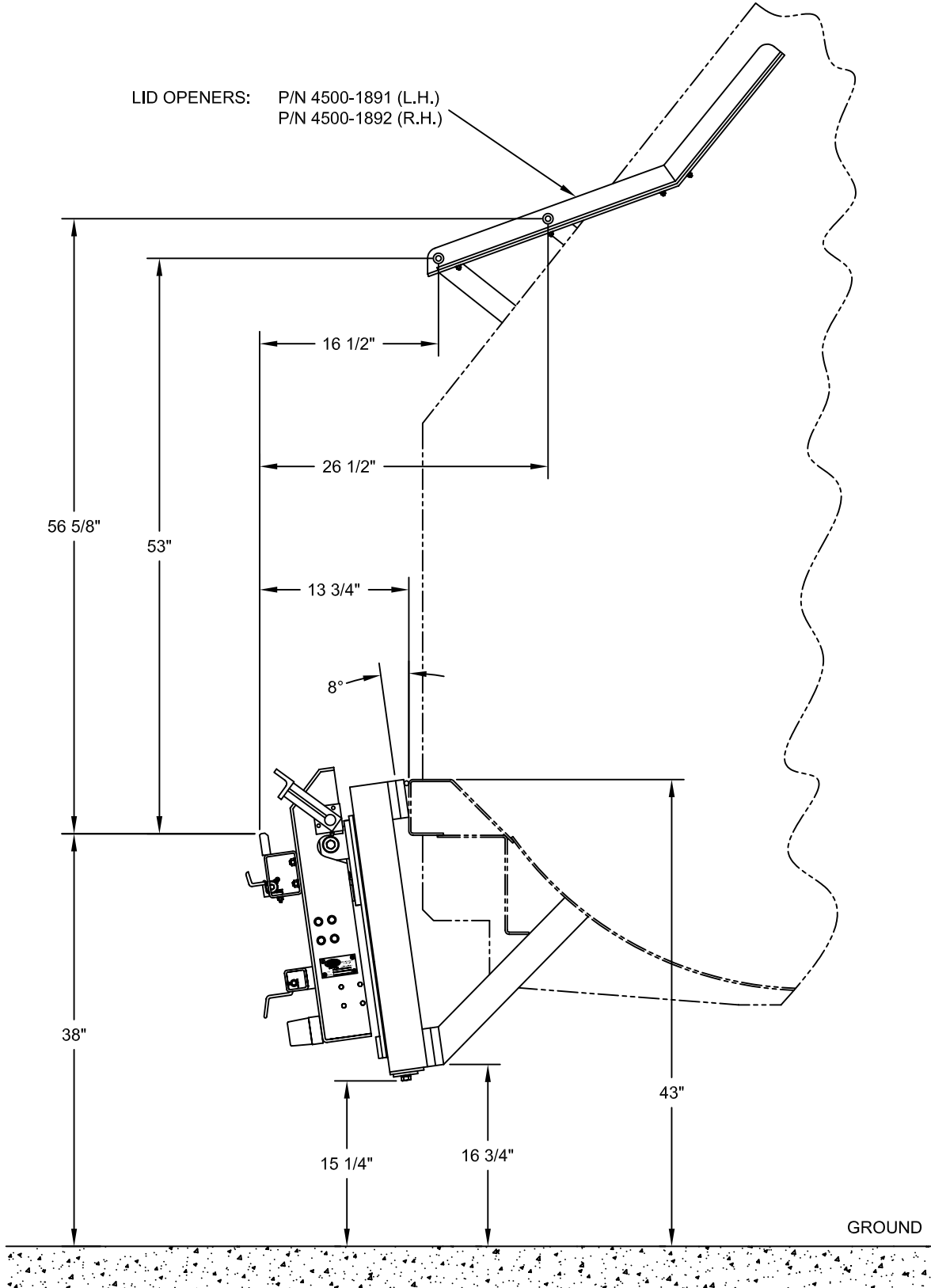


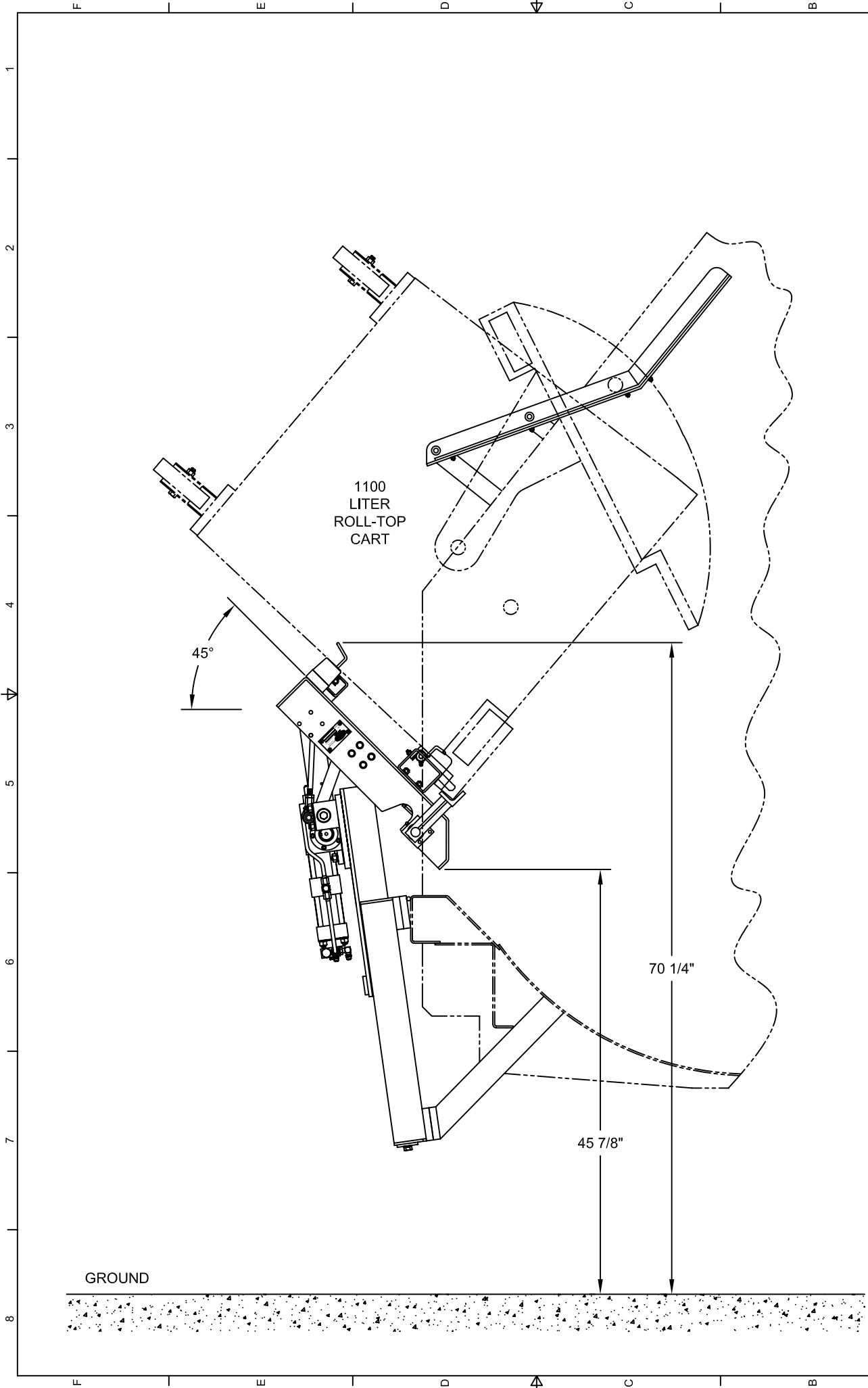
NOTE:

1. DIMENSIONS ACCOMMODATE ANSI Z245.60-2008 TYPE B CONTAINERS (DOMESTIC 2-BAR CARTS) AND MOST TYPE C CONTAINERS (EUROPEAN COMB-LIFT CARTS), BUT MAY VARY DUE TO CONTAINER SPECIFICATIONS OR APPLICATIONS.
2. ALL DIMENSIONS ARE APPROXIMATE.
3. FABRICATE BRACKETS TO MOUNT 8150-0198 MOUNTING BARS TO REAR OF TRUCK, THEN BOLT LIFT UNIT TO MOUNTING BARS.
4. PART NUMBERS: 1905-0068 - CVTL 2212 + 15" DW (SEQUENCE VALVE)
1905-0069 - CVTL 2212 + 15" DW (DUAL HAND VALVE)
1905-0118 - CVTL 2212 + 15" DW (NO CONTROLS)

LID OPENERS: P/N 4500-1891 (L.H.)
P/N 4500-1892 (R.H.)



| | | | | | |
|---|---------------|---|-------------------|--|-------------|
| <p>CONFIDENTIAL THE INFORMATION CONTAINED IN THIS DRAWING IS THE SOLE PROPERTY OF BAYNE MACHINE WORKS, INC. AND IS NOT TO BE REPRODUCED, COPIED, OR USED IN ANY MANNER WITHOUT THE WRITTEN PERMISSION OF BAYNE MACHINE WORKS, INC.</p> | | <p>UNLESS OTHERWISE SPECIFIED DIMENSIONS ARE IN INCHES FRACTIONAL ±.132 DECIMAL ±.015 THREE PLACE DECIMAL ±.005 ANGULAR TOLERANCES: MACHINED ±0.25 DEG BEND ±1.00 DEG</p> | | <p>BAYNE MACHINE WORKS, INC. 910 FORK SHOALS ROAD - GREENVILLE, SC 29605 - 864.288.3877</p> | |
| | | <p>TITLE CVTL 2212 + 15" DW SPECIFICATIONS</p> | | <p>SCALE NONE DWG NO H0300018</p> | |
| <p>MATERIAL</p> | | <p>DATE 11/19/2009</p> | <p>SCALE NONE</p> | <p>SHEET 1</p> | <p>OF 2</p> |
| <p>QTY</p> | <p>FINISH</p> | <p>DATE</p> | <p>DWG NO</p> | <p>REV</p> | <p>REV</p> |
| | | | | <p>H0300018</p> | <p>-</p> |



1100 LITER ROLL-TOP CART

45°

45 7/8"

70 1/4"

GROUND

| | | | | | |
|---|--------|---|----------|--|----|
| <p>CONFIDENTIAL THE INFORMATION CONTAINED IN THIS DRAWING IS THE SOLE PROPERTY OF BAYNE MACHINE WORKS, INC. AND IS NOT TO BE REPRODUCED, COPIED, OR USED IN ANY MANNER WITHOUT THE WRITTEN PERMISSION OF BAYNE MACHINE WORKS, INC.</p> | | <p>UNLESS OTHERWISE SPECIFIED DIMENSIONS ARE IN INCHES FRACTIONAL ±.032 DECIMAL ±.015 THREE PLACE DECIMAL ±.005 ANGULAR TOLERANCES: MACHINED ±0.25 DEG BEND ±1.00 DEG</p> | | <p>BAYNE MACHINE WORKS, INC. 910 FORK SHOALS ROAD - GREENVILLE, SC 29605 - 864.288.3877</p> | |
| | | <p>TITLE CVTL 2212 + 15" DW SPECIFICATIONS</p> | | <p>DRAWN BY CTT</p> | |
| <p>MATERIAL</p> | | DATE | SCALE | SHEET | OF |
| QTY | FINISH | 11/19/2009 | NONE | 2 | 2 |
| WEIGHT | | DATE | DWG NO | REV | |
| | | | H0300018 | - | |