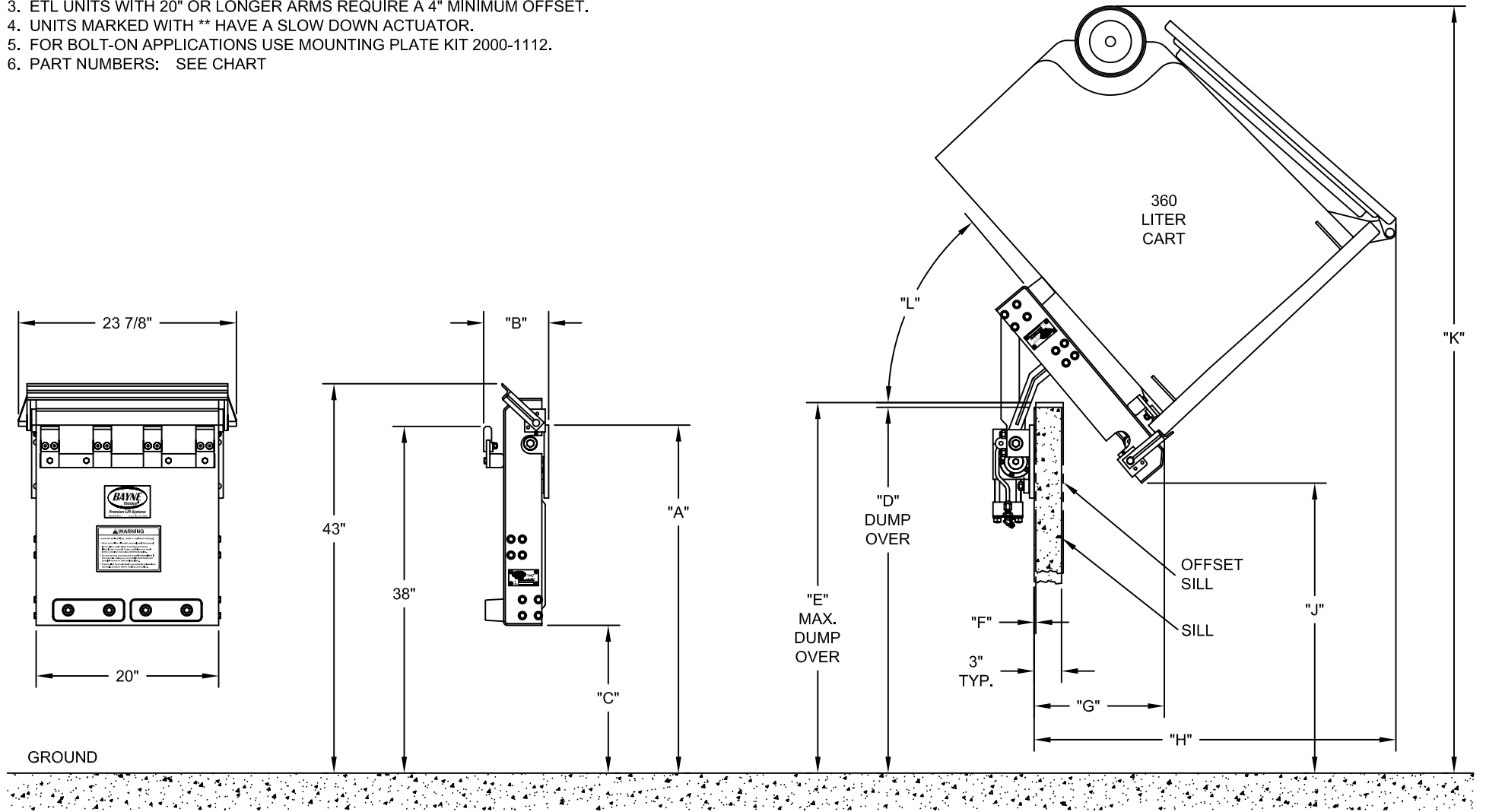


NOTE:

1. DIMENSIONS ACCOMMODATE MOST ANSI Z245.60-2008 TYPE C CONTAINERS (EUROPEAN COMB-LIFT CARTS), BUT MAY VARY DUE TO CONTAINER SPECIFICATIONS OR APPLICATIONS.
2. ALL DIMENSIONS ARE APPROXIMATE.
3. ETL UNITS WITH 20" OR LONGER ARMS REQUIRE A 4" MINIMUM OFFSET.
4. UNITS MARKED WITH ** HAVE A SLOW DOWN ACTUATOR.
5. FOR BOLT-ON APPLICATIONS USE MOUNTING PLATE KIT 2000-1112.
6. PART NUMBERS: SEE CHART



CONFIDENTIAL

THE INFORMATION CONTAINED IN THIS DRAWING IS THE SOLE PROPERTY OF BAYNE MACHINE WORKS, INC. AND IS RECALLABLE AT ANY TIME. IT MUST NOT BE COPIED OR USED DETRIMENTALLY TO THE INTEREST OF BAYNE MACHINE WORKS, INC.

UNLESS OTHERWISE SPECIFIED DIMENSIONS ARE IN INCHES
 LINEAR TOLERANCES:
 FRACTIONAL ±1/32
 TWO PLACE DECIMAL ±.015
 THREE PLACE DECIMAL ±.005
 ANGULAR TOLERANCES:
 MACHINED ±0.25 DEG
 BEND ±1.00 DEG

BAYNE MACHINE WORKS, INC.
 910 FORK SHOALS ROAD - GREENVILLE, SC 29605 - 864.288.3877

TITLE
ETL SERIES SPECIFICATIONS

MATERIAL		DRAWN BY CTT	DATE 10/16/2009	SCALE NONE	SHEET 1	OF 2
QTY	FINISH	WEIGHT	CHECKED BY	DATE	DWG NO H0700008	REV -

MODEL NUMBER	PART #	"A" DIM.	"B" DIM.	"C" DIM.	"D" DIM.	"E" DIM.	"F" DIM.	"G" DIM.	"H" DIM.	"J" DIM.	"K" DIM.	"L" DIM.
ETL 1116	1900-0047	38 1/8"	7 1/8"	16 1/4"	40 1/8"	40 5/8"	1/4"	14 1/4"	39 5/8"	31 3/4"	84 1/8"	50°
ETL 2216 **	1900-0296											
ETL 1116-2524	1900-0297	38 5/8"	12 7/8"	16 1/4"	41 1/8"	43 1/8"	3/4"	16 3/4"	44 1/2"	30 7/8"	83 1/4"	56°
ETL 2216-2524 **	1900-0298											
ETL 1116-2526	1900-0123	38 1/8"	13 1/8"	16 1/4"	40 3/8"	42 1/2"	1 1/2"	16 7/8"	47"	29 1/8"	80 7/8"	63°
ETL 2216-2526 **	1900-0299											
ETL 1120-2524	1900-0049	42 5/8"	12 7/8"	16 1/4"	46 3/8"	50 3/8"	1 1/2"	17 7/8"	44"	39 7/8"	92 1/8"	52°
ETL 2220-2524 **	1900-0053											
ETL 1120-2526	1900-0081	42 1/4"	13 1/2"	16 1/4"	45 5/8"	50 1/4"	1 3/4"	18 3/8"	46 3/4"	38 1/4"	90 1/2"	58°
ETL 2220-2526 **	1900-0124											
ETL 1124-2524 **	1900-0051	46 1/8"	11 1/8"	16 1/4"	50 1/4"	56 3/4"	1 3/8"	17 7/8"	44"	47 3/8"	99 3/4"	52°
ETL 2224-2524 **	1900-0055											
ETL 1124-2526 **	1900-0092	46 1/8"	13 1/8"	16 1/4"	50 5/8"	57 1/2"	1 5/8"	19 1/8"	46 3/8"	46 5/8"	99"	55°
ETL 2224-2526 **	1900-0125											
ETL 1128-2524 **	1900-0191	50 1/8"	11 1/8"	16 1/4"	55 3/8"	63 3/4"	1 3/8"	18 1/4"	43 5/8"	55 7/8"	108 1/8"	50°
ETL 2228-2524 **	1900-0057											
ETL 2228-2526 **	1900-0126	50 3/8"	14 1/8"	16 1/4"	56 1/2"	65 3/8"	1 1/2"	20 1/8"	45 3/4"	55 7/8"	108 1/4"	51°
ETL 1132-2524 **	1900-0295	54 1/8"	11 1/8"	16 1/4"	60 1/2"	71 1/8"	1 5/8"	18 5/8"	43 3/8"	64 1/4"	116 3/8"	48°
ETL 2232-2524 **	1900-0059											
ETL 2232-2526 **	1900-0127	54 1/8"	13 1/8"	16 1/4"	60 3/4"	71 3/4"	1 5/8"	20 1/8"	45 3/4"	63 5/8"	116"	51°
ETL 2234-2524 **	1900-0061	56 1/8"	11 1/8"	16 1/4"	63"	74 3/4"	1 5/8"	18 3/4"	43 1/4"	68 3/8"	120 1/2"	48°
ETL 2234-2526 **	1900-0128	56 3/8"	14 1/8"	16 1/4"	64 1/4"	76 1/4"	1 1/2"	20 5/8"	45 3/8"	68 1/2"	120 5/8"	48°

CONFIDENTIAL

THE INFORMATION CONTAINED IN THIS DRAWING IS THE SOLE PROPERTY OF BAYNE MACHINE WORKS, INC. AND IS RECALLABLE AT ANY TIME. IT MUST NOT BE COPIED OR USED DETRIMENTALLY TO THE INTEREST OF BAYNE MACHINE WORKS, INC.

UNLESS OTHERWISE SPECIFIED DIMENSIONS ARE IN INCHES
 LINEAR TOLERANCES:
 FRACTIONAL ±1/32
 TWO PLACE DECIMAL ±.015
 THREE PLACE DECIMAL ±.005
 ANGULAR TOLERANCES:
 MACHINED ±.025 DEG
 BEND ±1.00 DEG

BAYNE MACHINE WORKS, INC.
 910 FORK SHOALS ROAD - GREENVILLE, SC 29605 - 864.288.3877

TITLE
ETL SERIES SPECIFICATIONS

MATERIAL		DRAWN BY CTT	DATE 10/16/2009	SCALE NONE	SHEET OF 2 2
QTY	FINISH	WEIGHT	CHECKED BY	DATE	DWG NO H0700008
					REV -