

BAYNE MEDICAL WASTE SERIES LIFTERS

Commercial and Industrial Lifters for Medical Center Applications



Innovative. Economical. Efficient.

Bayne® Thinline® has been in operation for over 50 years and is esteemed as a pioneer in the medical waste management industry. Our specially engineered lines of hydraulic cart lifters, designed and assembled in America at our facility in Fort Payne, AL, are tailored to the specific needs of hospitals and medical facilities. Bayne's complete control over the manufacturing process guarantees that each lifter meets high standards of quality and reliability.

Bayne Thinline Medical Waste Series Lifters are created with the healthcare industry in mind, serving as the perfect solution for hospitals, clinics, medical laboratories, pharmacies, and other healthcare institutions. These lifters are sized to accommodate standard medical waste containers, streamlining the disposal of hazardous and non-hazardous waste. Equipped with a chute to prevent spillage, and available in fixed or movable configurations with fork pockets for effortless transport, these lifters enhance safety and efficiency in medical waste handling.

Enhance worker safety and minimize back injuries with Bayne Thinline Food Service Series lifters.



Premium Lift Systems

Precision, Quality, and Patented Engineering

For more information: Toll Free: 800-528-5308 | www.baynethinline.com

Bayne Thinline Premium Lift Systems | 4301 Gault Ave. North | Fort Payne, AL 35967

© Copyright 2024 Bayne Thinline All rights reserved



BAYNE MEDICAL FACILITY SERIES LIFTERS

Specifications & Features

Technical Specifications

- Available in 3 different options (Taskmaster, Taskmaster Hi-Lift, and Taskmaster Super Hi-Lift)
- Compatible with all standard 2-bar domestic carts
- Cycle times as low as 8 seconds
- Up to 1,000 lbs. lift capacity
- Strong ¼" wall structural steel tubing
- Sweeping action provides a greater pick-up envelope for lifting carts on uneven terrain
- Dumps well inside hopper to prevent spillage
- Easy-to-use pendant control is standard
- Self-lubricating composite bearings eliminate the need for greasing
- Non-adjustable solid hook-drive mechanism automatically secures cart during the dump cycle
- Powder-coated finish for durability
- 1-year limited warranty



C/I TASKMASTER



Cart Compatibility:

- ANSI Z245.60-2008 Type B Containers (domestic 2-bar carts)
- ANSI Z245.60-2008 Type C Containers (European comb-lift carts)



Premium Lift Systems

Toll Free: 800-528-5308 | www.baynethinline.com

Bayne Thinline Premium Lift Systems | 4301 Gault Ave. North | Fort Payne, AL 35967

© Copyright 2024 Bayne Thinline All rights reserved



C/I Taskmaster Features:

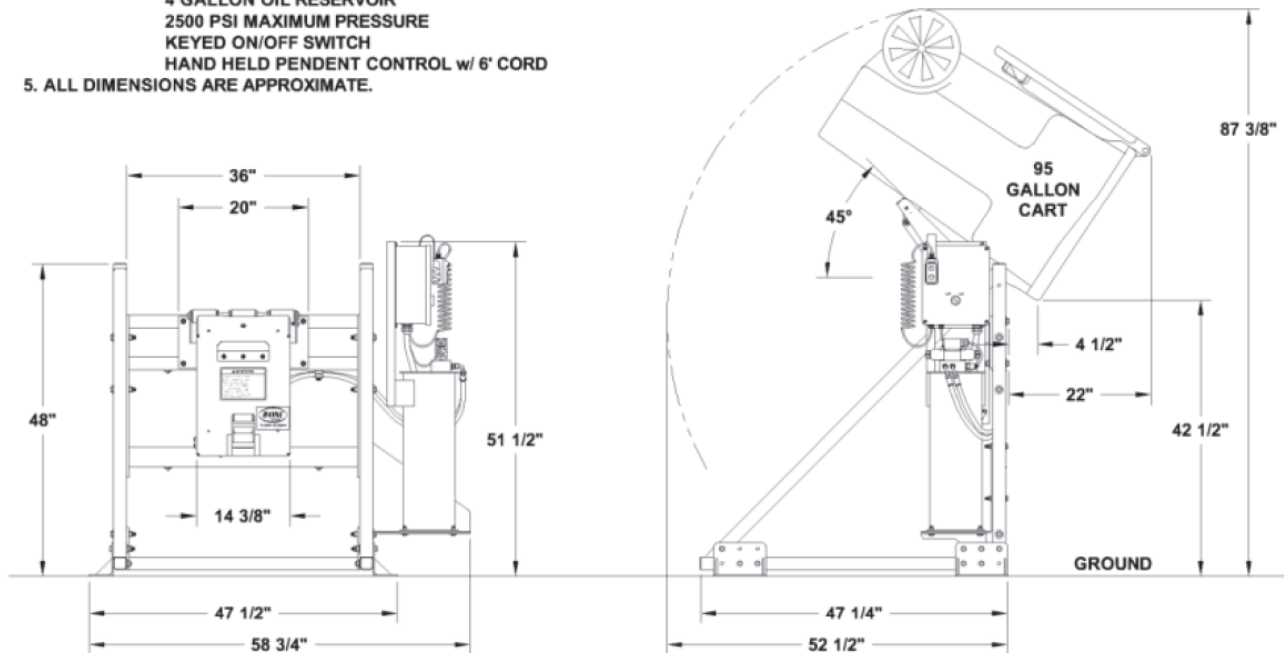
- 42 1/2" dump-over height
- 87 3/8" overhead height
- 45-degree dump angle
- 550 lbs. lift capacity
- 8-second cycle time

PERFORMANCE SPECIFICATIONS

| | |
|--------------------|---|
| Cart Compatibility | ANSI Z 245.60-2008 Type B Carts (domestic style 2-bar) |
| Lift Capacity | 550 lbs. @ 1800 psi |
| Hydraulic Pressure | Working Pressure – 1800 psi Maximum Pressure – 2500 psi |
| Hydraulic Flow | 1.8 gpm |
| Cycle Time | 8 seconds |
| Bearings | Self-Lubricating Composite Material |
| Cylinder | Welded Construction With Replaceable Seals 2.5" Bore x 6" Stroke |
| Finish | Safety Yellow Powder-Coating |
| Power Unit | 5 HP Motor (460V three-phase) |

NOTE:

1. COMPATIBLE CONTAINERS:
ANSI Z245.60-2008 TYPE B CONTAINERS (domestic 2-bar carts)
2. LIFT CAPACITY: 550 lbs @ 1800 PSI
3. CYCLE TIME: 8 SECONDS @ 1.8 GPM
4. POWER UNIT: 5 HP MOTOR (460V three-phase)
1.8 GPM GEAR PUMP
4 GALLON OIL RESERVOIR
2500 PSI MAXIMUM PRESSURE
KEYED ON/OFF SWITCH
HAND HELD PENDENT CONTROL w/ 6' CORD
5. ALL DIMENSIONS ARE APPROXIMATE.



Pictures and mechanical diagrams in this literature are illustrative only and may not be to scale. Specifications are subject to change without notice in order to accommodate improvements to the equipment. Data published herein is for information purposes only and shall not be construed to warrant suitability of the unit for any particular purpose, as performance may vary with the conditions encountered. The only warranty is our standard written Warranty Statement for this product at the time of shipment.



Premium Lift Systems

Toll Free: 800-528-5308 | www.baynethinline.com

Bayne Thinline Premium Lift Systems | 4301 Gault Ave. North | Fort Payne, AL 35967

© Copyright 2024 Bayne Thinline All rights reserved



C/I Taskmaster Hi-Lift Features:

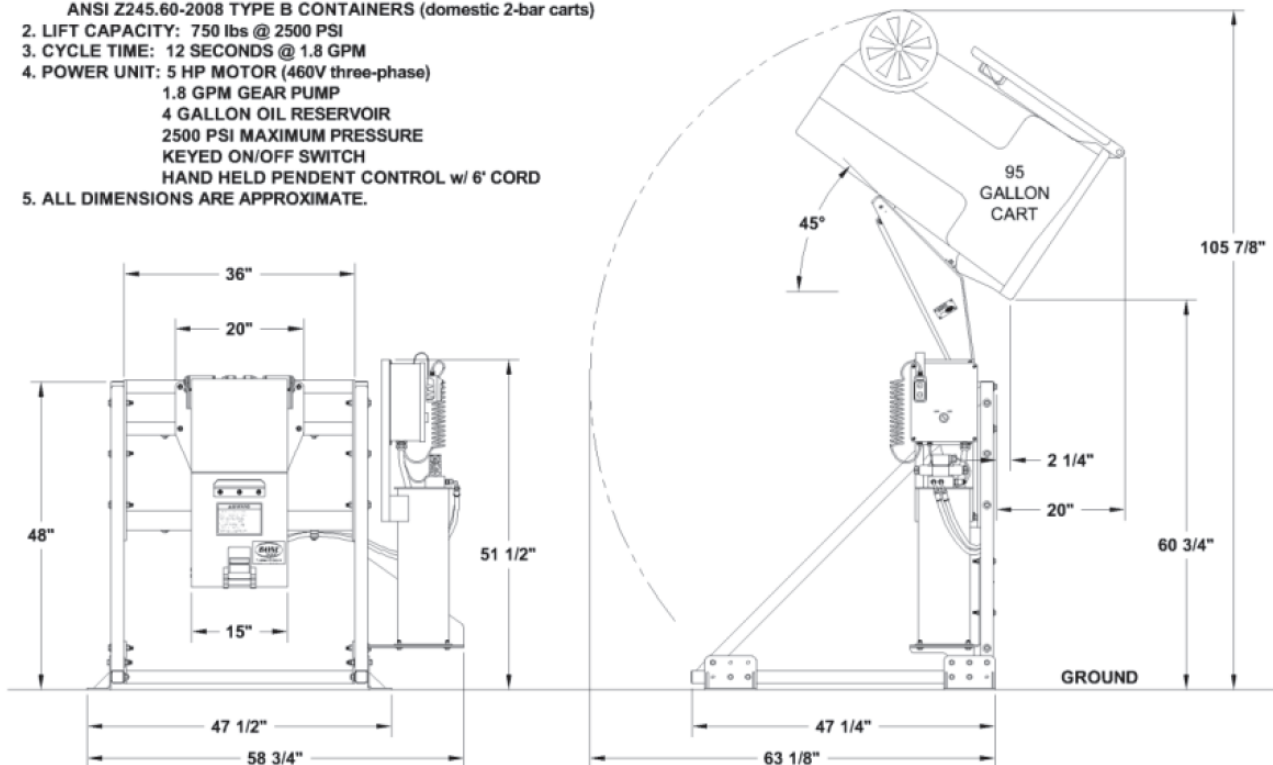
- 60 ³/₄" dump-over height
- 105 ⁷/₈" overhead height
- 45-degree dump angle
- 750 lbs. lift capacity
- 12-second cycle time

PERFORMANCE SPECIFICATIONS

| | |
|--------------------|---|
| Cart Compatibility | ANSI Z 245.60-2008 Type B Carts (domestic style 2-bar) |
| Lift Capacity | 750 lbs @ 2500 psi |
| Hydraulic Pressure | Working Pressure – 2500 psi Maximum Pressure – 2500 psi |
| Hydraulic Flow | 1.8 gpm |
| Cycle Time | 12 seconds |
| Bearings | Self-Lubricating Composite Material |
| Cylinder | Welded Construction With Replaceable Seals 2.5" Bore x 6" Stroke |
| Finish | Safety Yellow Powder-Coating |
| Power Unit | 5 HP Motor (460V three-phase) |

NOTE:

1. COMPATIBLE CONTAINERS:
ANSI Z245.60-2008 TYPE B CONTAINERS (domestic 2-bar carts)
2. LIFT CAPACITY: 750 lbs @ 2500 PSI
3. CYCLE TIME: 12 SECONDS @ 1.8 GPM
4. POWER UNIT: 5 HP MOTOR (460V three-phase)
1.8 GPM GEAR PUMP
4 GALLON OIL RESERVOIR
2500 PSI MAXIMUM PRESSURE
KEYED ON/OFF SWITCH
HAND HELD PENDENT CONTROL w/ 6' CORD
5. ALL DIMENSIONS ARE APPROXIMATE.



Pictures and mechanical diagrams in this literature are illustrative only and may not be to scale. Specifications are subject to change without notice in order to accommodate improvements to the equipment. Data published herein is for information purposes only and shall not be construed to warrant suitability of the unit for any particular purpose, as performance may vary with the conditions encountered. The only warranty is our standard written Warranty Statement for this product at the time of shipment.



Premium Lift Systems

Toll Free: 800-528-5308 | www.baynethinline.com

Bayne Thinline Premium Lift Systems | 4301 Gault Ave. North | Fort Payne, AL 35967

© Copyright 2024 Bayne Thinline All rights reserved



C/I TASKMASTER SUPER HI-LIFT Specifications & Dimensions

C/I Taskmaster Super Hi-Lift Features:

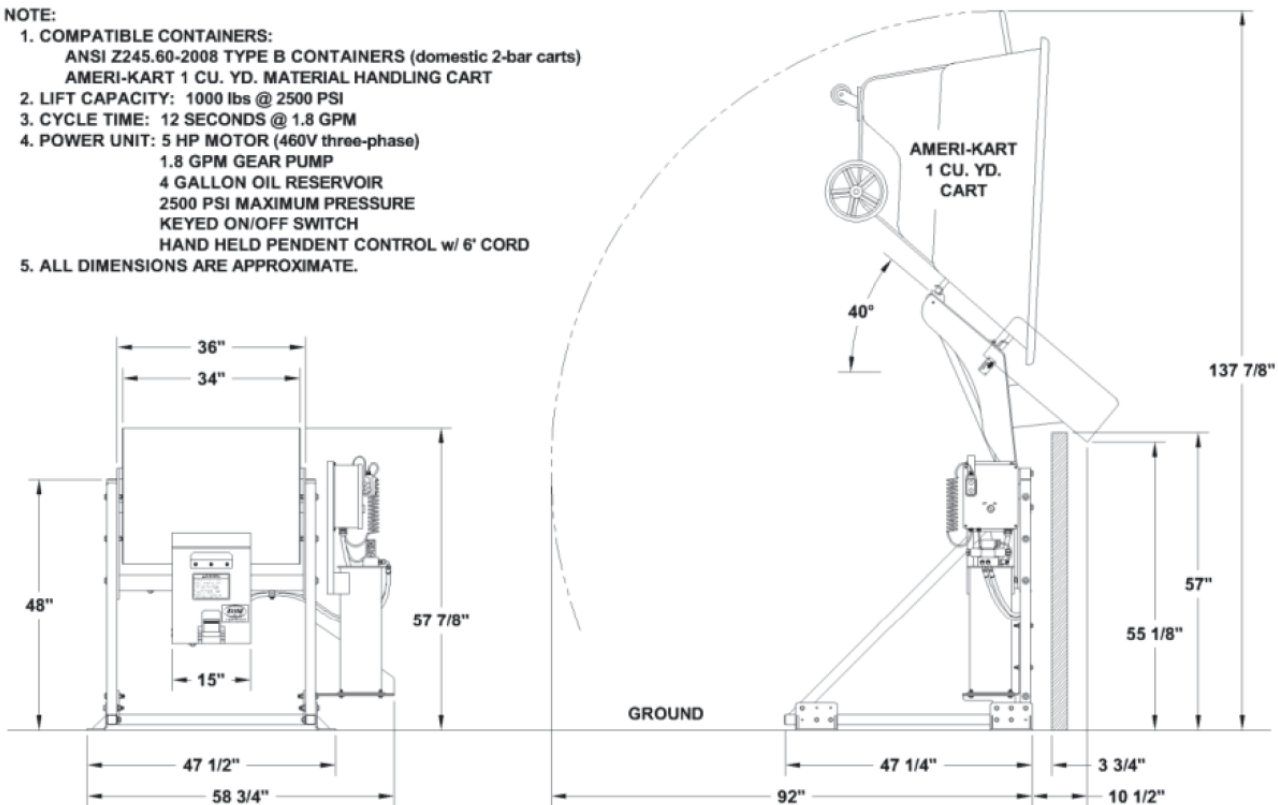
- Compatible with standard domestic style 2-bar carts, as well as 1/2 yd. and 1 yd. material-handling carts
- 57" dump-over height
- 137 7/8" overhead height
- 40-degree dump angle
- 1,000 lbs. lift capacity
- 12-second cycle time

PERFORMANCE SPECIFICATIONS

| | |
|--------------------|---|
| Cart Compatibility | ANSI Z 245.60-2008 Type B Carts (domestic style 2-bar) Plus 1/2 yd. and 1 yd. Material-Handling Carts |
| Lift Capacity | 1,000 lbs. @ 2500 psi |
| Hydraulic Pressure | Working Pressure – 2500 psi Maximum Pressure – 2500 psi |
| Hydraulic Flow | 1.8 gpm |
| Cycle Time | 12 seconds |
| Bearings | Self-Lubricating Composite Material |
| Cylinder | Welded Construction With Replaceable Seals 2.5" Bore x 6" Stroke |
| Finish | Safety Yellow Powder-Coating |
| Power Unit | 5 HP Motor (460V three-phase) |

NOTE:

- COMPATIBLE CONTAINERS:**
ANSI Z245.60-2008 TYPE B CONTAINERS (domestic 2-bar carts)
AMERI-KART 1 CU. YD. MATERIAL HANDLING CART
- LIFT CAPACITY:** 1000 lbs @ 2500 PSI
- CYCLE TIME:** 12 SECONDS @ 1.8 GPM
- POWER UNIT:** 5 HP MOTOR (460V three-phase)
1.8 GPM GEAR PUMP
4 GALLON OIL RESERVOIR
2500 PSI MAXIMUM PRESSURE
KEYED ON/OFF SWITCH
HAND HELD PENDENT CONTROL w/ 6' CORD
- ALL DIMENSIONS ARE APPROXIMATE.**



Pictures and mechanical diagrams in this literature are illustrative only and may not be to scale. Specifications are subject to change without notice in order to accommodate improvements to the equipment. Data published herein is for information purposes only and shall not be construed to warrant suitability of the unit for any particular purpose, as performance may vary with the conditions encountered. The only warranty is our standard written Warranty Statement for this product at the time of shipment.



Premium Lift Systems

Toll Free: 800-528-5308 | www.baynethinline.com

Bayne Thinline Premium Lift Systems | 4301 Gault Ave. North | Fort Payne, AL 35967

© Copyright 2024 Bayne Thinline All rights reserved

